

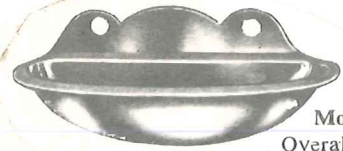
WALL FIXING ASH TRAYS

STAR QUALITIES

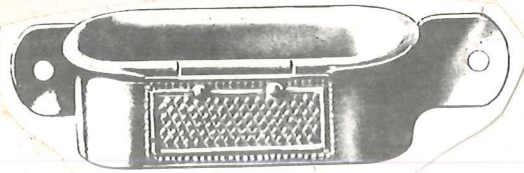
- Functional in design
- And have 'Eye Appeal'
- Safeguard against fire
- Various designs and shapes - blend with every requirement
- Robustly constructed
- Attractive finishes - Bronze, Grey, Chrome, etc.
- Simple and practical to use
- Keep premises safe, clean & tidy
- Easy emptying
- Economically priced



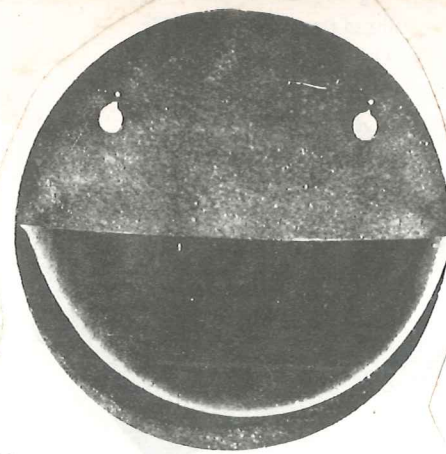
Model W/SC/57
With Spring Clip
size 3 3/4 x 1 1/2 in.



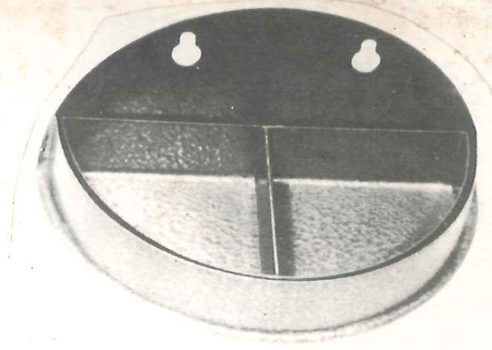
Model W/P/61
Overall 3 3/4 in. x 1 1/4 in. o/a



Model W/H/50
Hinged & Tip-up
Overall 5 1/4 x 1 1/2 in.



BALL TYPE WALL ASHTRAY Model No. W/B/42
As illustrated, with detachable lining.
Size: 6 in. x 6 in. x 3 in. Finishes: Chrome or Enamel



Half-Round Wall Ashtray Model No. W/HR/40
As illustrated, size 6 in. x 3 in. x 1 in., to be secured to wall or pillar. Made from steel, with detachable linings for emptying.
Standard colours: Hammer Bronze, Grey or Chrome
Other colours available.

Model No. LW/HR/45 As Model 40, but size:
7 1/2 in. x 3 in. x 1 1/4 in.

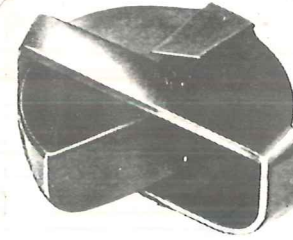


Model W/BR/49
Bracket Type
size 3 3/4 x 1 1/4 in.

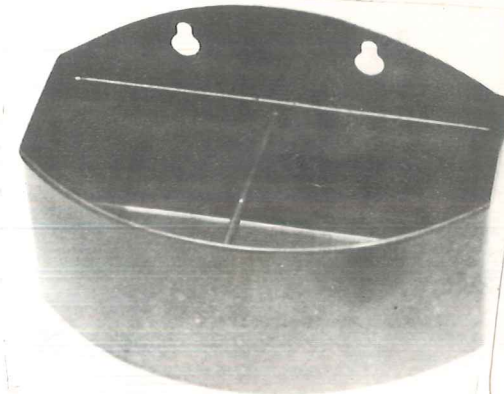
USEFUL AND DISTINCT in
Offices : Homes : Clubs : Shops
Warehouses : Waiting Rooms: Reception
Lifts : Corridors or on
Pillars : Columns : Chairs
(chair-back ashtrays - TipUp)



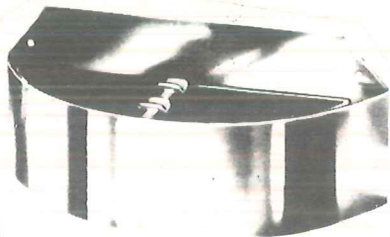
Model W/SF/48
Spring Fixing
size 3 3/4 x 1 1/2 in.



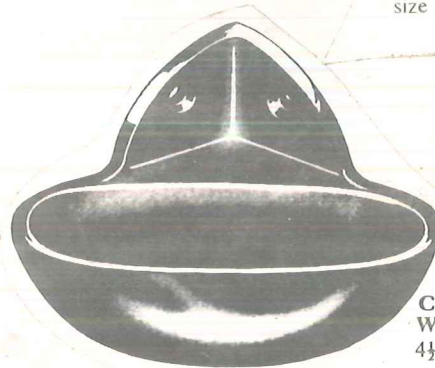
Simple - Swivel Type
Smartly mounted for (arm)
chairs with inner tray.
Model W/AC/56



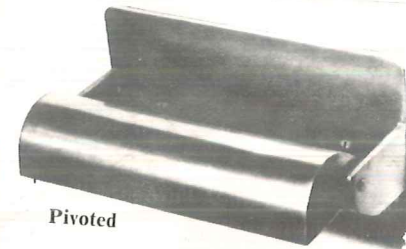
Oblong Wall Ashtray
Model No. W/O/44
As illustrated. Size 6 in. x 3 in. x 2 1/2 in.



Model W/CE/59
Cigarette End Wall Box
Stainless Steel or Chrome
12 x 4 1/2 in.

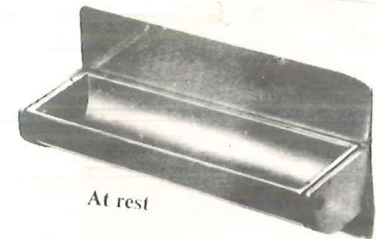


Corner Model
W/CO/60
4 1/2 in. o/a



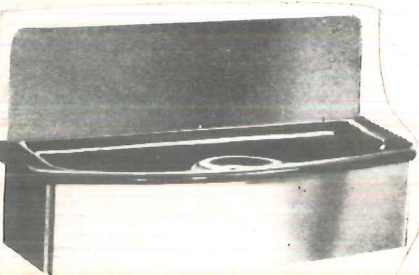
Pivoted

Swivel-Oblong Model W/SWO/54
Length 4 in. Depth 1 1/2 in.
Width 2 in.
A strong simple design.
Larger size available also.
Ash tray pivots for easy emptying.

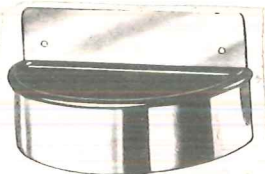


At rest

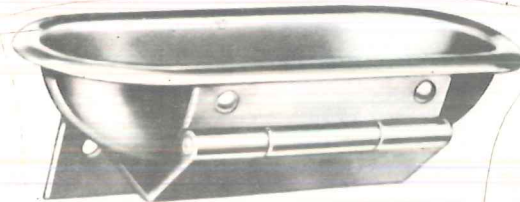
Raised plate at rear of ash tray prevents soiling of walls.
Invisible screw fixing.



Model W/FS/57
8 in. across 4 in. deep



Model W/FS/58 7 in. across 3 in. deep



Model W/HB/52
Hinged Bracket Type
size 3 3/4 x 1 1/2 in.